



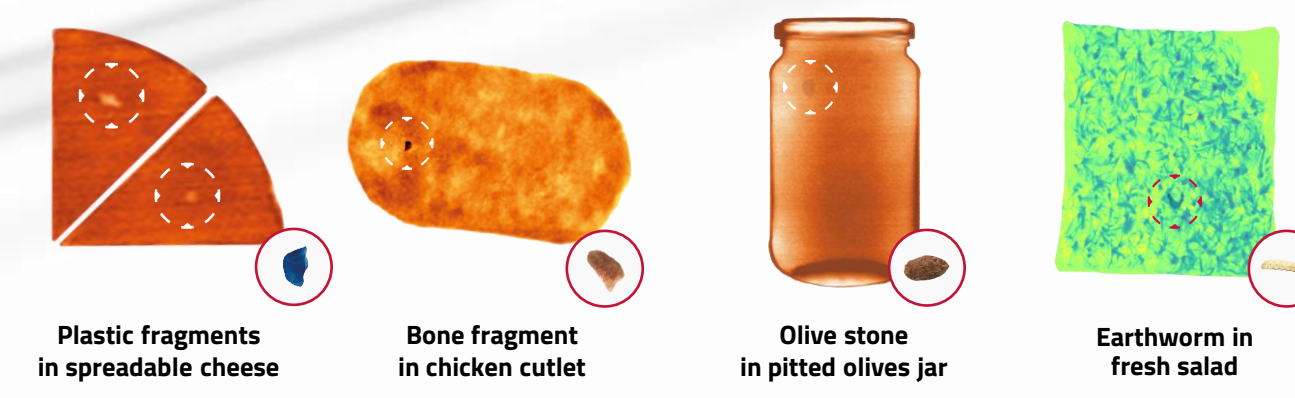
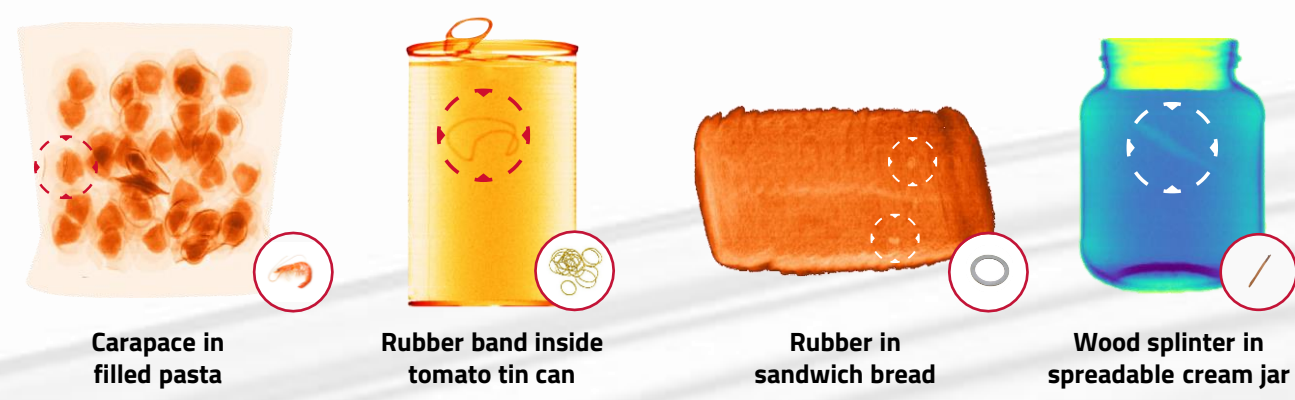
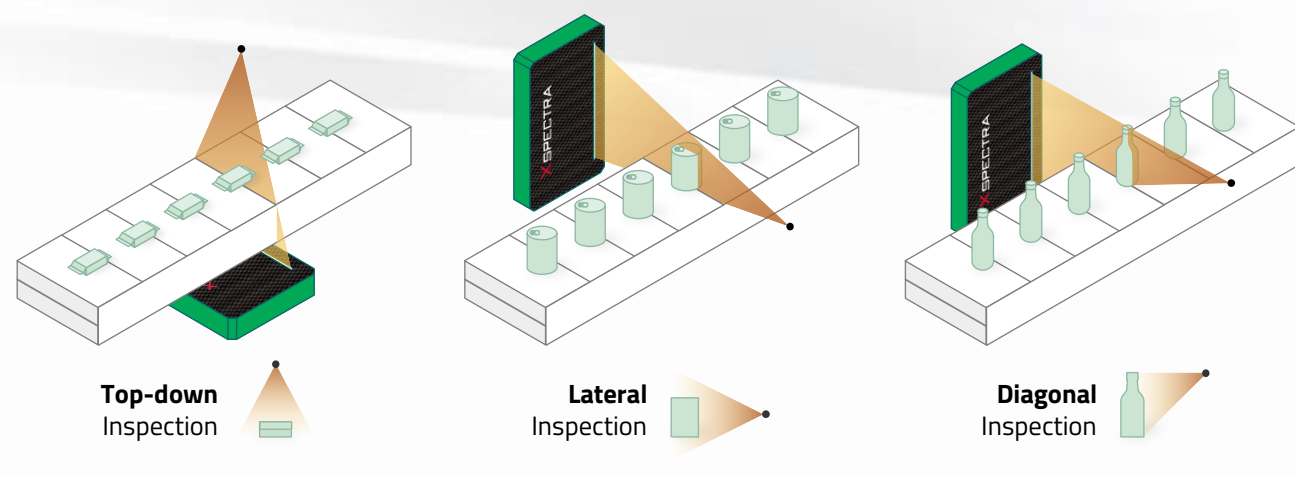
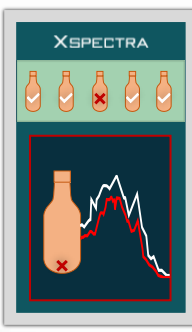
The most advanced food inspection system

The result of over 10 years of applied in-house R&D

The unique synergy of 3 levels of high technological innovations

A cutting-edge AI inspection software based on Artificial Neural Networks

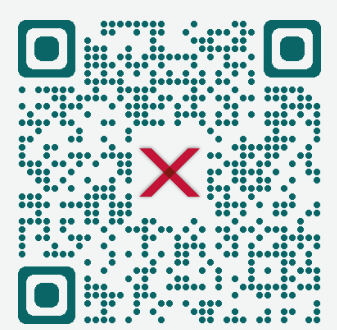
A real time **multi-energy** spectroscopic analysis up to **1.024 energy levels** (conventional inspection solutions stop at 2)



XSPECTRA

THE MOST ADVANCED INSPECTION TECHNOLOGY

BY XNEXT



Xnext S.p.A.

Via Valtorta 48 – 20127 Milan – Italy

+39 02 4539 0524

info@x-next.com

www.x-next.com

www.xspectra.eu



REACH US ON OUR SOCIAL MEDIA:



XNEXT

ADVANCED INSPECTION TECHNOLOGY



XSPECTRA
THE MOST ADVANCED INSPECTION TECHNOLOGY

x-next.com
MADE IN ITALY

The 1st company in the world to

- Design a food inspection **multi energy** detector
- Develop an **AI based** inspection software
- Realize the entire system in-house, from the **detector** to the **machine**

XSpectra[®] Detection

One machine to detect them all

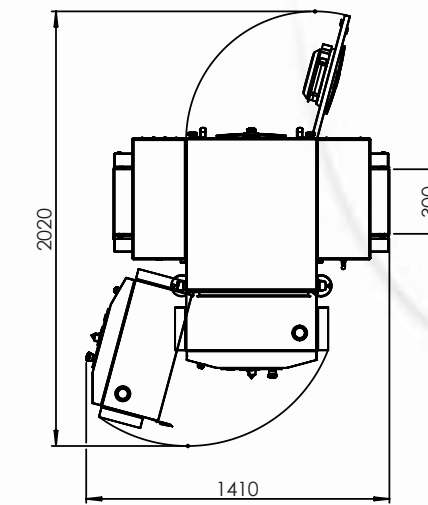
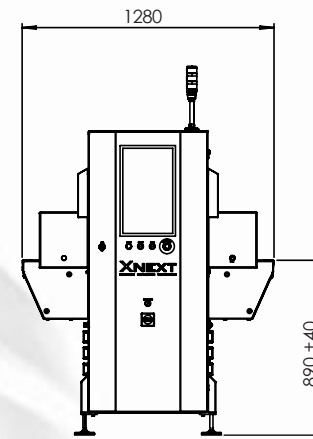


WE DETECT WHAT THE OTHERS DON'T

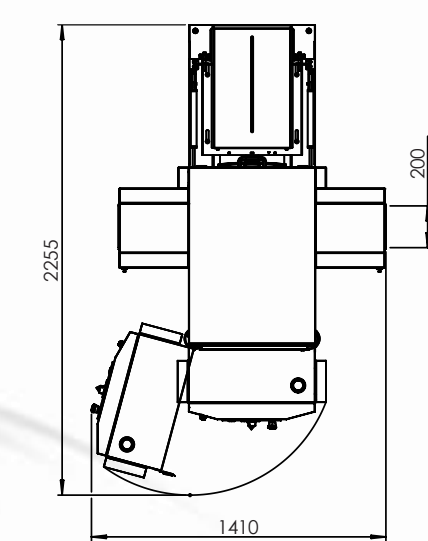
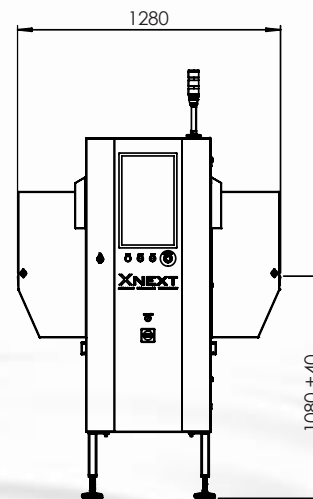
- Non-conformities**
- ▶ Volume
 - ▶ Product Size
 - ▶ Shape
 - ▶ Lack of Product

XSPECTRA - XIS4 Top-Down

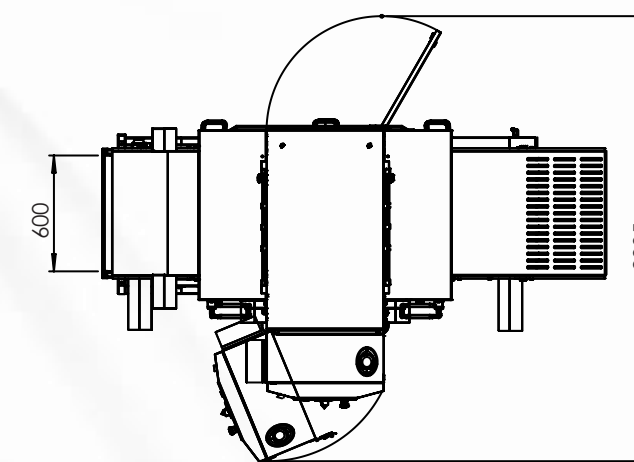
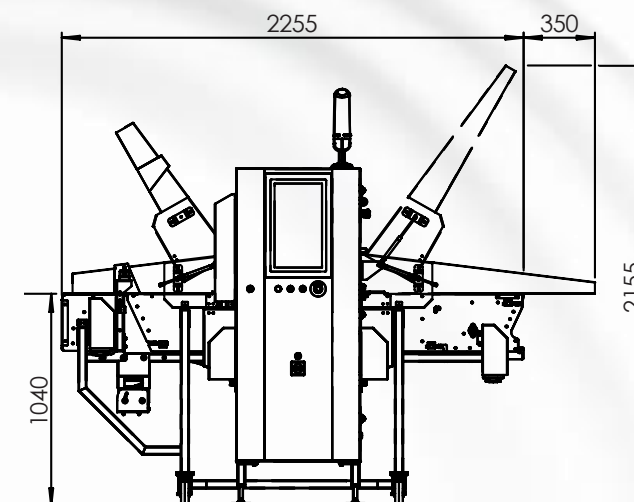
Scale Drawings



XSPECTRA - XIS4 Lateral/Diagonal



XSPECTRA - XIS4 Top-Down XL



XSPECTRA Technical datasheet

Model	XIS4 Top Down	XIS4 Lateral/Diagonal	XIS4 Top Down XL
Inspection Area	300 mm	300 mm	600 mm
Weight	~400 kg	~500 kg	~700 kg
Belt speed	Up to 50 m/min (depending on product weight)		
Belt type/material	Blue TPU mats suitable for food contact, brushless motors, 10mm inlet and outlet rollers for optimal product transfer. Easy replacement		
Construction materials	Stainless Steel AISI 304 and anodized aluminum		
X-ray tube maximum power	350/500 W		
Detector key features	Solid state, 0.8/0.4 mm pixels		
Cooling System Detector/Generator	Closed-loop water cooling through integrated chiller		
X-ray protection	Lead-free curtains 1.85 mm thick, suitable for food contact		
Tower light	RYG (optional: acoustic alarm)		
Ejection system	Air jet or piston depending on product features		
Compressed air supply	3 to 10 Bar		
Dust/humidity protection grade	IP56		
HMI	18,5" Full HD touchscreen monitor. UI in Italian, English, French. Password-protected access levels for parameter management & machine data access		
Data and images	Image download to USB driver, minimum storage of 6 months		
Environmental Conditions	5° - 35° C, max 80% relative humidity, no condensation		
Storage conditions	-20° ÷ +50° C, dry		
Image download	Via SFTP		
Power supply	230 VAC, 50 Hz, 16A, Single-phase		

Optionals

- ▶ Multi-line inspection
- ▶ Blue silicone mat suitable for food contact, when higher friction is required
- ▶ Curtains 1.25 mm thick, suitable for light products
- ▶ Visible/infrared inspection modules
- ▶ Check-weight module
- ▶ Scrap and ejection check
- ▶ Product guides customizable
- ▶ OPC-UA protocol I/F (other standards available on request)
- ▶ Protection up to IP69K
- ▶ Non-standard slide height
- ▶ Preventive Care Solution Service
- ▶ Services Upon Request

The machines shown in this leaflet are to be considered as an example of standard machines, as well as fully customizable. Xnext, in view of the continuous technologic evolution promoting, may modify technical data and features of the products described in this leaflet without notice. Such leaflet has to be considered merely indicative and does not constitute any offer.

The machines shown in this leaflet are to be considered as an example of standard machines, as well as fully customizable. Xnext, in view of the continuous technologic evolution promoting, may modify technical data and features of the products described in this leaflet without notice. Such leaflet has to be considered merely indicative and does not constitute any offer.